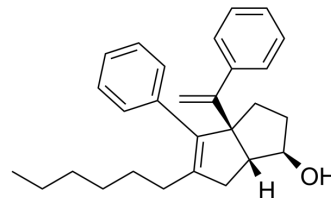


RR-RJW100

Cat. No.:	HY-131445B		
Molecular Formula:	C ₂₈ H ₃₄ O		
Molecular Weight:	386.57		
Target:	Others		
Pathway:	Others		
Storage:	Pure form	-20°C	3 years
		4°C	2 years
	In solvent	-80°C	6 months
		-20°C	1 month



SOLVENT & SOLUBILITY

In Vitro

DMSO : 100 mg/mL (258.69 mM; Need ultrasonic)

Concentration	Solvent	Mass		
		1 mg	5 mg	10 mg
Preparing Stock Solutions	1 mM	2.5869 mL	12.9343 mL	25.8685 mL
	5 mM	0.5174 mL	2.5869 mL	5.1737 mL
	10 mM	0.2587 mL	1.2934 mL	2.5869 mL

Please refer to the solubility information to select the appropriate solvent.

BIOLOGICAL ACTIVITY

Description

RR-RJW100, the enantiomer of RJW100, is an nuclear receptor liver receptor homolog 1 (LRH-1) and steroidogenic factor 1 (SF-1) agonist. RJW100 can be synthesized as two enantiomers, RR-RJW100 and SS-RJW100, with RR-RJW100 shown to be the more potent LRH-1 agonist. RR-RJW100 is involved in the regulation of metabolic homeostasis and is used in studies of diabetes, liver disease and inflammatory bowel disease^{[1][2]}.

REFERENCES

[1]. Suzanne G Mays, et al. Enantiomer-specific activities of an LRH-1 and SF-1 dual agonist. *Sci Rep.* 2020 Dec 17;10(1):22279.

[2]. Alisa Lang, et al. The Medicinal Chemistry and Therapeutic Potential of LRH-1 Modulators. *J Med Chem.* 2021 Dec 9;64(23):16956-16973.

Caution: Product has not been fully validated for medical applications. For research use only.

Tel: 609-228-6898

Fax: 609-228-5909

E-mail: tech@MedChemExpress.com

Address: 1 Deer Park Dr, Suite Q, Monmouth Junction, NJ 08852, USA