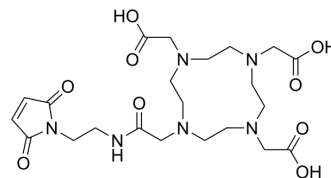


Maleimide-DOTA

| | |
|---------------------------|--|
| Cat. No.: | HY-133540 |
| CAS No.: | 1006711-90-5 |
| Molecular Formula: | C ₂₂ H ₃₄ N ₆ O ₉ |
| Molecular Weight: | 526.54 |
| Target: | ADC Linker |
| Pathway: | Antibody-drug Conjugate/ADC Related |
| Storage: | -20°C, sealed storage, away from moisture and light * In solvent : -80°C, 6 months; -20°C, 1 month (sealed storage, away from moisture and light) |



SOLVENT & SOLUBILITY

In Vitro

H₂O : 100 mg/mL (189.92 mM; Need ultrasonic)
DMSO : 100 mg/mL (189.92 mM; ultrasonic and warming and heat to 60°C)

| Concentration | Mass | | |
|---------------|-----------|-----------|------------|
| | 1 mg | 5 mg | 10 mg |
| 1 mM | 1.8992 mL | 9.4960 mL | 18.9919 mL |
| 5 mM | 0.3798 mL | 1.8992 mL | 3.7984 mL |
| 10 mM | 0.1899 mL | 0.9496 mL | 1.8992 mL |

Please refer to the solubility information to select the appropriate solvent.

In Vivo

- Add each solvent one by one: PBS
Solubility: 100 mg/mL (189.92 mM); Clear solution; Need ultrasonic
- Add each solvent one by one: 10% DMSO >> 40% PEG300 >> 5% Tween-80 >> 45% saline
Solubility: ≥ 1.25 mg/mL (2.37 mM); Clear solution
- Add each solvent one by one: 10% DMSO >> 90% (20% SBE-β-CD in saline)
Solubility: ≥ 1.25 mg/mL (2.37 mM); Clear solution
- Add each solvent one by one: 10% DMSO >> 90% corn oil
Solubility: ≥ 1.25 mg/mL (2.37 mM); Clear solution

BIOLOGICAL ACTIVITY

| | |
|-------------------------------------|--|
| Description | Maleimide-DOTA is a non-cleavable ADC linker used in the synthesis of antibody-drug conjugates (ADCs). |
| IC₅₀ & Target | Non-cleavable |
| In Vitro | ADCs are comprised of an antibody to which is attached an ADC cytotoxin through an ADC linker. |

MCE has not independently confirmed the accuracy of these methods. They are for reference only.

CUSTOMER VALIDATION

- ACS Omega. August 5, 2022.

See more customer validations on www.MedChemExpress.com

Caution: Product has not been fully validated for medical applications. For research use only.

Tel: 609-228-6898

Fax: 609-228-5909

E-mail: tech@MedChemExpress.com

Address: 1 Deer Park Dr, Suite Q, Monmouth Junction, NJ 08852, USA