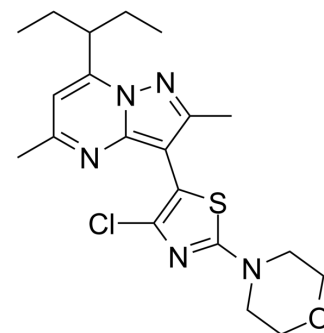


## Tildacerfont

<b>Cat. No.:</b>	HY-113603
<b>CAS No.:</b>	1014983-00-6
<b>Molecular Formula:</b>	C <sub>20</sub> H <sub>26</sub> ClN <sub>5</sub> OS
<b>Molecular Weight:</b>	419.97
<b>Target:</b>	CRFR
<b>Pathway:</b>	GPCR/G Protein
<b>Storage:</b>	4°C, sealed storage, away from moisture and light * In solvent : -80°C, 6 months; -20°C, 1 month (sealed storage, away from moisture and light)



### SOLVENT & SOLUBILITY

#### In Vitro

DMSO : 10 mg/mL (23.81 mM; Need ultrasonic)

Concentration	Solvent	Mass		
		1 mg	5 mg	10 mg
Preparing Stock Solutions	1 mM	2.3811 mL	11.9056 mL	23.8112 mL
	5 mM	0.4762 mL	2.3811 mL	4.7622 mL
	10 mM	0.2381 mL	1.1906 mL	2.3811 mL

Please refer to the solubility information to select the appropriate solvent.

### BIOLOGICAL ACTIVITY

#### Description

Tildacerfont is a potent and orally active corticotrophin-releasing factor type 1 (CRF1) receptor antagonist. Tildacerfont effectively reduces adrenocorticotrophic hormone (ACTH) and adrenal androgen levels. Tildacerfont has favourable safety profile. Tildacerfont can be used for researching congenital adrenal hyperplasia<sup>[1]</sup>.

#### IC<sub>50</sub> & Target

CRF1 receptor<sup>[1]</sup>

### REFERENCES

[1]. Prete A, et al. Clinical advances in the pharmacotherapy of congenital adrenal hyperplasia. Eur J Endocrinol. 2021;186(1):R1-R14. Published 2021 Nov 30.

---

**Caution: Product has not been fully validated for medical applications. For research use only.**

Tel: 609-228-6898

Fax: 609-228-5909

E-mail: [tech@MedChemExpress.com](mailto:tech@MedChemExpress.com)

Address: 1 Deer Park Dr, Suite Q, Monmouth Junction, NJ 08852, USA