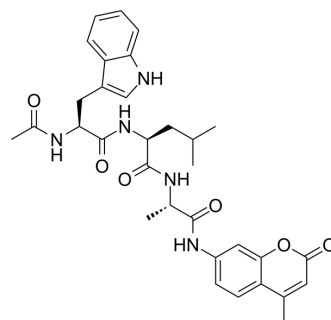


## Ac-WLA-AMC

<b>Cat. No.:</b>	HY-123051
<b>CAS No.:</b>	1104011-59-7
<b>Molecular Formula:</b>	C <sub>32</sub> H <sub>37</sub> N <sub>5</sub> O <sub>6</sub>
<b>Molecular Weight:</b>	587.67
<b>Target:</b>	Proteasome
<b>Pathway:</b>	Metabolic Enzyme/Protease
<b>Storage:</b>	Sealed storage, away from moisture and light
	Powder    -80°C    2 years
	-20°C    1 year
	* In solvent : -80°C, 6 months; -20°C, 1 month (sealed storage, away from moisture and light)



### SOLVENT & SOLUBILITY

#### In Vitro

DMSO : 250 mg/mL (425.41 mM; Need ultrasonic)

Concentration	Solvent	Mass		
		1 mg	5 mg	10 mg
Preparing Stock Solutions	1 mM	1.7016 mL	8.5082 mL	17.0164 mL
	5 mM	0.3403 mL	1.7016 mL	3.4033 mL
	10 mM	0.1702 mL	0.8508 mL	1.7016 mL

Please refer to the solubility information to select the appropriate solvent.

### BIOLOGICAL ACTIVITY

#### Description

Ac-WLA-AMC is a specific 20S constitutive proteasome  $\beta$ 5 fluorogenic substrate<sup>[1]</sup>.

#### IC<sub>50</sub> & Target

20S constitutive proteasome  $\beta$ 5<sup>[1]</sup>

### REFERENCES

[1]. Kim S, et al. Evaluation of Immunoproteasome-Specific Proteolytic Activity Using Fluorogenic Peptide Substrates. Immune Netw. 2022 Apr 15;22(3):e28.

---

**Caution: Product has not been fully validated for medical applications. For research use only.**

Tel: 609-228-6898

Fax: 609-228-5909

E-mail: [tech@MedChemExpress.com](mailto:tech@MedChemExpress.com)

Address: 1 Deer Park Dr, Suite Q, Monmouth Junction, NJ 08852, USA