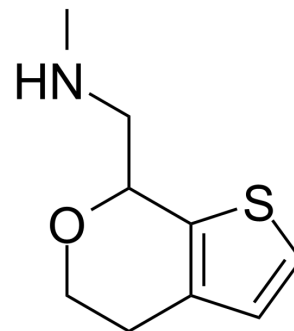


(Rac)-SEP-363856

Cat. No.:	HY-136109B
CAS No.:	1310426-29-9
Molecular Formula:	C ₉ H ₁₃ NOS
Molecular Weight:	183.27
Target:	5-HT Receptor
Pathway:	GPCR/G Protein; Neuronal Signaling
Storage:	Please store the product under the recommended conditions in the Certificate of Analysis.



BIOLOGICAL ACTIVITY

Description

(Rac)-SEP-363856 is the racemate of SEP-363856. SEP-363856 (SEP-856), an orally active and CNS active psychotropic agent with a unique, non-D2/5-HT_{2A} mechanism of action, exerts its antipsychotic-like effects. SEP-363856 (SEP-856) has the potential for the treatment of schizophrenia^[1].

REFERENCES

[1]. Dedic N, et al. SEP-363856, a Novel Psychotropic Agent with a Unique, Non-D2 Receptor Mechanism of Action. J Pharmacol Exp Ther. 2019 Oct;371(1):1-14.

Caution: Product has not been fully validated for medical applications. For research use only.

Tel: 609-228-6898

Fax: 609-228-5909

E-mail: tech@MedChemExpress.com

Address: 1 Deer Park Dr, Suite Q, Monmouth Junction, NJ 08852, USA