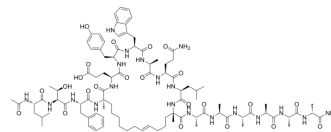


Sulanemadlin

Cat. No.:	HY-P4210
CAS No.:	1451199-98-6
Molecular Formula:	C ₉₅ H ₁₄₀ N ₂₀ O ₂₃
Molecular Weight:	1930.25
Sequence:	Ac-Leu-Thr-Phe-Ala-Glu-Tyr-Trp-Ala-Gln-Leu-{dAla}-Ala-Ala-Ala-Ala-Ala-{dAla}-NH ₂ (staple between Ala4 and d-Ala11)
Sequence Shortening:	Ac-LTFAEYWAQL(dA)AAAAA(dA)-NH ₂ (staple between Ala4 and d-Ala11)
Target:	MDM-2/p53
Pathway:	Apoptosis
Storage:	Sealed storage, away from moisture and light, under nitrogen Powder -80°C 2 years -20°C 1 year

* In solvent : -80°C, 6 months; -20°C, 1 month (sealed storage, away from moisture and light, under nitrogen)



SOLVENT & SOLUBILITY

In Vitro

DMSO : ≥ 100 mg/mL (51.81 mM)
* "≥" means soluble, but saturation unknown.

	Solvent Concentration	Mass		
		1 mg	5 mg	10 mg
Preparing Stock Solutions	1 mM	0.5181 mL	2.5903 mL	5.1807 mL
	5 mM	0.1036 mL	0.5181 mL	1.0361 mL
	10 mM	0.0518 mL	0.2590 mL	0.5181 mL

Please refer to the solubility information to select the appropriate solvent.

BIOLOGICAL ACTIVITY

Description

Sulanemadlin (ALRN-6924) is a potent p53-based peptidomimetic macrocycles. Sulanemadlin is a inhibitor of the p53-MDM2, p53-MDMX, or both p53 and MDM2 and MDMX protein-protein interactions. Sulanemadlin can be used for cancers research^[1].

REFERENCES

[1]. Manuel AIVADO, et al. Peptidomimetic macrocycles and uses thereof. WO2018208954A2

Caution: Product has not been fully validated for medical applications. For research use only.

Tel: 609-228-6898

Fax: 609-228-5909

E-mail: tech@MedChemExpress.com

Address: 1 Deer Park Dr, Suite Q, Monmouth Junction, NJ 08852, USA