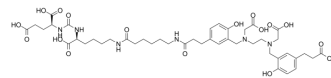


PSMA-11

Cat. No.:	HY-125399
CAS No.:	1366302-52-4
Molecular Formula:	C ₄₄ H ₆₂ N ₆ O ₁₇
Molecular Weight:	946.99
Target:	Others
Pathway:	Others
Storage:	-20°C, protect from light * In solvent : -80°C, 6 months; -20°C, 1 month (protect from light)



SOLVENT & SOLUBILITY

In Vitro	DMSO : 100 mg/mL (105.60 mM; Need ultrasonic)				
	Preparing Stock Solutions	Solvent Concentration \ Mass	1 mg	5 mg	10 mg
		1 mM	1.0560 mL	5.2799 mL	10.5598 mL
		5 mM	0.2112 mL	1.0560 mL	2.1120 mL
		10 mM	0.1056 mL	0.5280 mL	1.0560 mL
Please refer to the solubility information to select the appropriate solvent.					
In Vivo	1. Add each solvent one by one: 10% DMSO >> 40% PEG300 >> 5% Tween-80 >> 45% saline Solubility: ≥ 2.5 mg/mL (2.64 mM); Clear solution 2. Add each solvent one by one: 10% DMSO >> 90% (20% SBE-β-CD in saline) Solubility: ≥ 2.5 mg/mL (2.64 mM); Clear solution 3. Add each solvent one by one: 10% DMSO >> 90% corn oil Solubility: ≥ 2.5 mg/mL (2.64 mM); Clear solution				

BIOLOGICAL ACTIVITY

Description	PSMA-11 is a positron emission tomography (PET) tracer. PSMA-11 detects prostate cancer relapses and metastases by binding to the extracellular domain of prostate-specific membrane antigen (PSMA) ^[1] .
-------------	--

REFERENCES

[1]. Demirci E, et al. Normal distribution pattern and physiological variants of 68Ga-PSMA-11 PET/CT imaging. Nucl Med Commun. 2016 Nov;37(11):1169-79.

Caution: Product has not been fully validated for medical applications. For research use only.

Tel: 609-228-6898

Fax: 609-228-5909

E-mail: tech@MedChemExpress.com

Address: 1 Deer Park Dr, Suite Q, Monmouth Junction, NJ 08852, USA