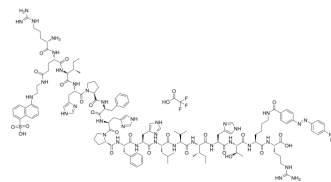


## Arg-Glu(edans)-Ile-His-Pro-Phe-His-Pro-Phe-His-Leu-Val-Ile-His-Thr-Lys(dabcyl)-Arg TFA

<b>Cat. No.:</b>	HY-P5123A
<b>Molecular Formula:</b>	C <sub>131</sub> H <sub>180</sub> F <sub>3</sub> N <sub>37</sub> O <sub>26</sub> S
<b>Molecular Weight:</b>	2778.12
<b>Sequence:</b>	Arg-{Glu(edans)-Ile-His-Pro-Phe-His-Pro-Phe-His-Leu-Val-Ile-His-Thr-{Lys(dabcyl)}-Arg
<b>Sequence Shortening:</b>	R-{Glu(edans)-IHPFHPFHLVIHT-{Lys(dabcyl)}-R
<b>Target:</b>	Others
<b>Pathway:</b>	Others
<b>Storage:</b>	Sealed storage, away from moisture and light, under nitrogen
	Powder    -80°C    2 years
	-20°C    1 year



\* In solvent : -80°C, 6 months; -20°C, 1 month (sealed storage, away from moisture and light, under nitrogen)

### SOLVENT & SOLUBILITY

#### In Vitro

H<sub>2</sub>O : 50 mg/mL (18.00 mM; Need ultrasonic)

Concentration	Solvent	Mass		
		1 mg	5 mg	10 mg
Preparing Stock Solutions	1 mM	0.3600 mL	1.7998 mL	3.5996 mL
	5 mM	0.0720 mL	0.3600 mL	0.7199 mL
	10 mM	0.0360 mL	0.1800 mL	0.3600 mL

Please refer to the solubility information to select the appropriate solvent.

### BIOLOGICAL ACTIVITY

#### Description

Arg-Glu(edans)-Ile-His-Pro-Phe-His-Pro-Phe-His-Leu-Val-Ile-His-Thr-Lys(dabcyl)-Ar TFA is a fluorogenic renin substrate based on the N-terminal tetradecapeptide sequence of human angiotensinogen (hTDP)<sup>[1]</sup>.

### REFERENCES

[1]. Katherine Paschalidou, et al. Highly sensitive intramolecularly quenched fluorogenic substrates for renin based on the combination of L-2-amino-3-(7-methoxy-4-coumaryl)propionic acid with 2,4-dinitrophenyl groups at various positions. *Biochem J.* 2004 Sep 15;382(Pt 3):1031-8.

---

**Caution: Product has not been fully validated for medical applications. For research use only.**

Tel: 609-228-6898

Fax: 609-228-5909

E-mail: [tech@MedChemExpress.com](mailto:tech@MedChemExpress.com)

Address: 1 Deer Park Dr, Suite Q, Monmouth Junction, NJ 08852, USA