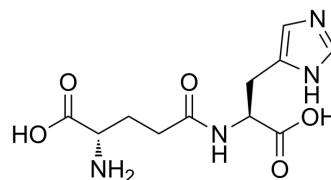


## γ-Glutamylhistidine

<b>Cat. No.:</b>	HY-P5097
<b>CAS No.:</b>	37460-15-4
<b>Molecular Formula:</b>	C <sub>11</sub> H <sub>16</sub> N <sub>4</sub> O <sub>5</sub>
<b>Molecular Weight:</b>	284.27
<b>Target:</b>	Others
<b>Pathway:</b>	Others
<b>Storage:</b>	Sealed storage, away from moisture and light Powder    -80°C    2 years -20°C    1 year * In solvent : -80°C, 6 months; -20°C, 1 month (sealed storage, away from moisture and light)



### SOLVENT & SOLUBILITY

#### In Vitro

H<sub>2</sub>O : 50 mg/mL (175.89 mM; Need ultrasonic)

Concentration	Mass		
	1 mg	5 mg	10 mg
1 mM	3.5178 mL	17.5889 mL	35.1778 mL
5 mM	0.7036 mL	3.5178 mL	7.0356 mL
10 mM	0.3518 mL	1.7589 mL	3.5178 mL

Please refer to the solubility information to select the appropriate solvent.

### BIOLOGICAL ACTIVITY

#### Description

γ-Glutamylhistidine is a polypeptide that can be found by peptide screening. Peptide screening is a research tool that pools active peptides primarily by immunoassay. Peptide screening can be used for protein interaction, functional analysis, epitope screening, especially in the field of agent research and development<sup>[1]</sup>.

### REFERENCES

[1]. Birnbaum S, et al. Peptide screening. *Current Opinion in Biotechnology*, 1992, 3(1): 49-54.

---

**Caution: Product has not been fully validated for medical applications. For research use only.**

Tel: 609-228-6898

Fax: 609-228-5909

E-mail: [tech@MedChemExpress.com](mailto:tech@MedChemExpress.com)

Address: 1 Deer Park Dr, Suite Q, Monmouth Junction, NJ 08852, USA