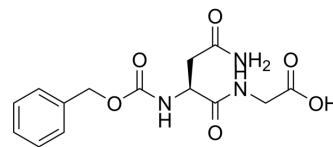


## Cbz-Asn-Gly-OH

Cat. No.:	HY-P5008
CAS No.:	56675-97-9
Molecular Formula:	C <sub>14</sub> H <sub>17</sub> N <sub>3</sub> O <sub>6</sub>
Molecular Weight:	323.3
Sequence:	{Cbz-Asn}-Gly
Sequence Shortening:	{Cbz-Asn}-G
Target:	Others
Pathway:	Others
Storage:	Sealed storage, away from moisture and light
	Powder    -80°C    2 years
	-20°C    1 year



\* In solvent : -80°C, 6 months; -20°C, 1 month (sealed storage, away from moisture and light)

### SOLVENT & SOLUBILITY

#### In Vitro

DMSO : 100 mg/mL (309.31 mM; Need ultrasonic)

Concentration	Solvent	Mass		
		1 mg	5 mg	10 mg
Preparing Stock Solutions	1 mM	3.0931 mL	15.4655 mL	30.9310 mL
	5 mM	0.6186 mL	3.0931 mL	6.1862 mL
	10 mM	0.3093 mL	1.5466 mL	3.0931 mL

Please refer to the solubility information to select the appropriate solvent.

### BIOLOGICAL ACTIVITY

#### Description

Cbz-Asn-Gly-OH is a polypeptide that can be found by peptide screening. Peptide screening is a research tool that pools active peptides primarily by immunoassay. Peptide screening can be used for protein interaction, functional analysis, epitope screening, especially in the field of agent research and development<sup>[1]</sup>.

### REFERENCES

[1]. Birnbaum S, et al. Peptide screening. Current Opinion in Biotechnology, 1992, 3(1): 49-54.

---

**Caution: Product has not been fully validated for medical applications. For research use only.**

Tel: 609-228-6898

Fax: 609-228-5909

E-mail: [tech@MedChemExpress.com](mailto:tech@MedChemExpress.com)

Address: 1 Deer Park Dr, Suite Q, Monmouth Junction, NJ 08852, USA