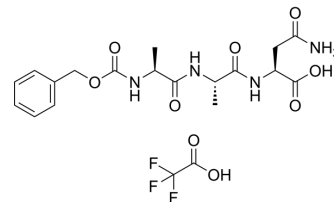


Cbz-Ala-Ala-Asn TFA

Cat. No.:	HY-150242A
Molecular Formula:	C ₂₀ H ₂₅ F ₃ N ₄ O ₉
Molecular Weight:	522.43
Target:	Others
Pathway:	Others
Storage:	Sealed storage, away from moisture and light
	Powder -80°C 2 years
	-20°C 1 year

* In solvent : -80°C, 6 months; -20°C, 1 month (sealed storage, away from moisture and light)



BIOLOGICAL ACTIVITY

Description

Cbz-Ala-Ala-Asn TFA is a peptide that designed based on the sequence of the substrate of legumain. Legumain is a cysteine protease. Cbz-Ala-Ala-Asn TFA can be applied as a scaffold for drug delivery^{[1][2]}.

REFERENCES

[1]. Shan L. Cy5-labeled aza-peptidyl Pro-Asn epoxide. 2010 May 12 [updated 2010 Jun 3]. In: Molecular Imaging and Contrast Agent Database (MICAD) [Internet]. Bethesda (MD): National Center for Biotechnology Information (US); 2004–2013.

[2]. Poreba M. Recent advances in the development of legumain-selective chemical probes and peptide prodrugs. Biol Chem. 2019 Nov 26;400(12):1529-1550.

Caution: Product has not been fully validated for medical applications. For research use only.

Tel: 609-228-6898

Fax: 609-228-5909

E-mail: tech@MedChemExpress.com

Address: 1 Deer Park Dr, Suite Q, Monmouth Junction, NJ 08852, USA