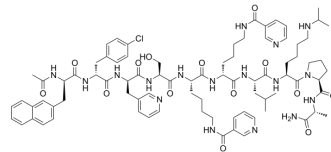


Antide

Cat. No.:	HY-P0013
CAS No.:	112568-12-4
Molecular Formula:	C ₈₂ H ₁₀₈ ClN ₁₇ O ₁₄
Molecular Weight:	1591.29
Target:	GnRH Receptor
Pathway:	GPCR/G Protein
Storage:	Sealed storage, away from moisture and light Powder -80°C 2 years -20°C 1 year * In solvent : -80°C, 6 months; -20°C, 1 month (sealed storage, away from moisture and light)



SOLVENT & SOLUBILITY

In Vitro

H₂O : 10 mg/mL (6.28 mM; Need ultrasonic)

Concentration	Mass		
	1 mg	5 mg	10 mg
1 mM	0.6284 mL	3.1421 mL	6.2842 mL
5 mM	0.1257 mL	0.6284 mL	1.2568 mL
10 mM	---	---	---

Please refer to the solubility information to select the appropriate solvent.

BIOLOGICAL ACTIVITY

Description

Antide (D-21074) is a potent LHRH antagonist. Antide also can be used for the research of prostatic cancer.

In Vivo

Antide (subcutaneously; 1, 3, 6, 10 and 15 mg/kg; once or on 5 consecutive days) can induce a long-term chemical castration in adult male rats and cynomolgus monkeys^[1].

MCE has not independently confirmed the accuracy of these methods. They are for reference only.

Animal Model:	Cynomolgus monkey and rat ^[1]
Dosage:	1, 3, 6, 10 and 15 mg/kg
Administration:	Subcutaneous, once or on 5 consecutive days
Result:	Had a dose-dependent inhibitory effect on serum concentration of LH (only rat) and testosterone and on the weights of the testes, prostates and seminal vesicles.

Achieved long-lasting castration-like effects at concentrations between 6 (less than or equal to 8 weeks) and 15 mg/kg (greater than 8 weeks) in the rat.
Induced a prolonged inhibitory effect only at 15 mg/kg and the duration was only 2-3 weeks in the cynomolgus monkey.

REFERENCES

[1]. U F Habenicht, et al. Effect of the new potent LHRH antagonist antide. J Steroid Biochem Mol Biol. 1990 Dec 20;37(6):937-42.

Caution: Product has not been fully validated for medical applications. For research use only.

Tel: 609-228-6898

Fax: 609-228-5909

E-mail: tech@MedChemExpress.com

Address: 1 Deer Park Dr, Suite Q, Monmouth Junction, NJ 08852, USA