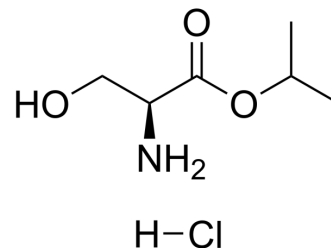


L-Serine isopropyl ester hydrochloride

| | | | |
|---------------------------|--|-------|----------|
| Cat. No.: | HY-Z0711 | | |
| CAS No.: | 37592-53-3 | | |
| Molecular Formula: | C ₆ H ₁₄ ClNO ₃ | | |
| Molecular Weight: | 183.63 | | |
| Target: | Amino Acid Derivatives | | |
| Pathway: | Others | | |
| Storage: | Powder | -20°C | 3 years |
| | | 4°C | 2 years |
| | In solvent | -80°C | 6 months |
| | | -20°C | 1 month |



SOLVENT & SOLUBILITY

In Vitro

H₂O : ≥ 100 mg/mL (544.57 mM)
 * "≥" means soluble, but saturation unknown.

| Concentration | Mass | | |
|---------------|-----------|------------|------------|
| | 1 mg | 5 mg | 10 mg |
| 1 mM | 5.4457 mL | 27.2287 mL | 54.4573 mL |
| 5 mM | 1.0891 mL | 5.4457 mL | 10.8915 mL |
| 10 mM | 0.5446 mL | 2.7229 mL | 5.4457 mL |

Please refer to the solubility information to select the appropriate solvent.

BIOLOGICAL ACTIVITY

Description

L-Serine isopropyl ester hydrochloride is a serine derivative^[1].

In Vitro

Amino acids and amino acid derivatives have been commercially used as ergogenic supplements. They influence the secretion of anabolic hormones, supply of fuel during exercise, mental performance during stress related tasks and prevent exercise induced muscle damage. They are recognized to be beneficial as ergogenic dietary substances^[1].
 MCE has not independently confirmed the accuracy of these methods. They are for reference only.

REFERENCES

[1]. Luckose F, et al. Effects of amino acid derivatives on physical, mental, and physiological activities. Crit Rev Food Sci Nutr. 2015;55(13):1793-1144.

Caution: Product has not been fully validated for medical applications. For research use only.

Tel: 609-228-6898

Fax: 609-228-5909

E-mail: tech@MedChemExpress.com

Address: 1 Deer Park Dr, Suite Q, Monmouth Junction, NJ 08852, USA