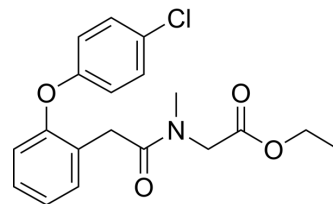


## Ethyl 2-(2-(2-(4-chlorophenoxy)phenyl)-N-methylacetamido)acetate

Cat. No.:	HY-20153		
CAS No.:	1035404-17-1		
Molecular Formula:	C <sub>19</sub> H <sub>20</sub> ClNO <sub>4</sub>		
Molecular Weight:	361.82		
Target:	Amino Acid Derivatives		
Pathway:	Others		
Storage:	Pure form	-20°C	3 years
		4°C	2 years
	In solvent	-80°C	6 months
		-20°C	1 month



### BIOLOGICAL ACTIVITY

Description	Ethyl 2-(2-(2-(4-chlorophenoxy)phenyl)-N-methylacetamido)acetate is a <a href="#">Glycine</a> (HY-Y0966) derivative <sup>[1]</sup> .
In Vitro	Amino acids and amino acid derivatives have been commercially used as ergogenic supplements. They influence the secretion of anabolic hormones, supply of fuel during exercise, mental performance during stress related tasks and prevent exercise induced muscle damage. They are recognized to be beneficial as ergogenic dietary substances <sup>[1]</sup> . MCE has not independently confirmed the accuracy of these methods. They are for reference only.

### REFERENCES

[1]. Luckose F, et al. Effects of amino acid derivatives on physical, mental, and physiological activities. Crit Rev Food Sci Nutr. 2015;55(13):1793-1144.

**Caution: Product has not been fully validated for medical applications. For research use only.**

Tel: 609-228-6898

Fax: 609-228-5909

E-mail: tech@MedChemExpress.com

Address: 1 Deer Park Dr, Suite Q, Monmouth Junction, NJ 08852, USA