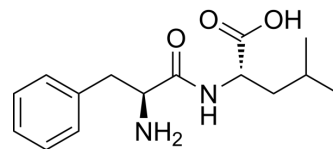


L-Phenylalanyl-L-leucine

Cat. No.:	HY-W068839		
CAS No.:	3303-55-7		
Molecular Formula:	C ₁₅ H ₂₂ N ₂ O ₃		
Molecular Weight:	278.35		
Target:	Amino Acid Derivatives		
Pathway:	Others		
Storage:	Powder	-20°C	3 years
		4°C	2 years
	In solvent	-80°C	6 months
		-20°C	1 month



SOLVENT & SOLUBILITY

In Vitro

DMSO : 3.85 mg/mL (13.83 mM; ultrasonic and warming and heat to 80°C)

Concentration	Mass		
	1 mg	5 mg	10 mg
1 mM	3.5926 mL	17.9630 mL	35.9260 mL
5 mM	0.7185 mL	3.5926 mL	7.1852 mL
10 mM	0.3593 mL	1.7963 mL	3.5926 mL

Please refer to the solubility information to select the appropriate solvent.

BIOLOGICAL ACTIVITY

Description

L-Phenylalanyl-L-leucine is a leucine derivative^[1].

In Vitro

Amino acids and amino acid derivatives have been commercially used as ergogenic supplements. They influence the secretion of anabolic hormones, supply of fuel during exercise, mental performance during stress related tasks and prevent exercise induced muscle damage. They are recognized to be beneficial as ergogenic dietary substances^[1]. MCE has not independently confirmed the accuracy of these methods. They are for reference only.

REFERENCES

[1]. Luckose F, et al. Effects of amino acid derivatives on physical, mental, and physiological activities. Crit Rev Food Sci Nutr. 2015;55(13):1793-1144.

Caution: Product has not been fully validated for medical applications. For research use only.

Tel: 609-228-6898

Fax: 609-228-5909

E-mail: tech@MedChemExpress.com

Address: 1 Deer Park Dr, Suite Q, Monmouth Junction, NJ 08852, USA