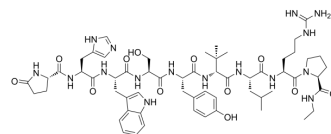


## Lecirelin

Cat. No.:	HY-P0051
CAS No.:	61012-19-9
Molecular Formula:	C <sub>59</sub> H <sub>84</sub> N <sub>16</sub> O <sub>12</sub>
Molecular Weight:	1209.4
Sequence:	{Glp}-His-Trp-Ser-Tyr-Val-Leu-Arg-Pro
Sequence Shortening:	{Glp}-HWSYVLRP
Target:	GnRH Receptor
Pathway:	GPCR/G Protein
Storage:	Sealed storage, away from moisture
	Powder    -80°C    2 years
	-20°C    1 year



\* In solvent : -80°C, 6 months; -20°C, 1 month (sealed storage, away from moisture)

### SOLVENT & SOLUBILITY

#### In Vitro

H<sub>2</sub>O : 25 mg/mL (20.67 mM; Need ultrasonic)  
 DMSO : 12.1 mg/mL (10.00 mM; Need ultrasonic and warming)

Preparing Stock Solutions	Solvent Concentration	Mass		
		1 mg	5 mg	10 mg
	1 mM	0.8269 mL	4.1343 mL	8.2686 mL
	5 mM	0.1654 mL	0.8269 mL	1.6537 mL
	10 mM	0.0827 mL	0.4134 mL	0.8269 mL

Please refer to the solubility information to select the appropriate solvent.

### BIOLOGICAL ACTIVITY

#### Description

Lecirelin, a synthetic gonadotropin-releasing hormone (GnRH) analogue, acts as a GnRH agonist. Lecirelin is widely used for the research of bovine ovarian follicular cysts<sup>[1]</sup>.

#### In Vitro

Lecirelin (2.07 μM) significantly increases the tension and frequency of contractions in preovulatory follicles (PF), small follicular cysts (FC-S), and large follicular cysts (FC-L)<sup>[1]</sup>.  
 Lecirelin increases the strips from preovulatory follicles contract significantly more than strips from cysts<sup>[1]</sup>.  
 MCE has not independently confirmed the accuracy of these methods. They are for reference only.

### REFERENCES

**Caution: Product has not been fully validated for medical applications. For research use only.**

Tel: 609-228-6898

Fax: 609-228-5909

E-mail: [tech@MedChemExpress.com](mailto:tech@MedChemExpress.com)

Address: 1 Deer Park Dr, Suite Q, Monmouth Junction, NJ 08852, USA