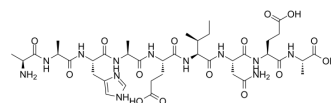


OVA (329-337)

Cat. No.:	HY-P2531
CAS No.:	276889-40-8
Molecular Formula:	C ₃₈ H ₆₀ N ₁₂ O ₁₅
Molecular Weight:	924.95
Sequence:	Ala-Ala-His-Ala-Glu-Ile-Asn-Glu-Ala
Sequence Shortening:	AAHAEINEA
Target:	Others
Pathway:	Others
Storage:	Sealed storage, away from moisture
	Powder -80°C 2 years
	-20°C 1 year



* In solvent : -80°C, 6 months; -20°C, 1 month (sealed storage, away from moisture)

SOLVENT & SOLUBILITY

In Vitro	DMSO : < 1 mg/mL (ultrasonic) (insoluble or slightly soluble)
----------	---

BIOLOGICAL ACTIVITY

Description	OVA (329-337) is a 9-aa core epitope (329–337) located in the C-terminal end of the OVA peptide ^[1] .
In Vitro	OVA (329-339) induces to reach the half-maximal proliferation with 25 μM and 30 μM in DO11.10 and OT-II cell, respectively ^[1] . MCE has not independently confirmed the accuracy of these methods. They are for reference only.

REFERENCES

[1]. J M Robertson, et al. DO11.10 and OT-II T cells recognize a C-terminal ovalbumin 323-339 epitope. J Immunol. 2000 May 1;164(9):4706-12.

Caution: Product has not been fully validated for medical applications. For research use only.

Tel: 609-228-6898

Fax: 609-228-5909

E-mail: tech@MedChemExpress.com

Address: 1 Deer Park Dr, Suite Q, Monmouth Junction, NJ 08852, USA