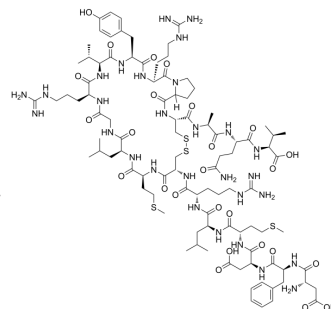


[Ala17]-MCH

Cat. No.:	HY-P1204
CAS No.:	359784-84-2
Molecular Formula:	C ₉₇ H ₁₅₅ N ₂₉ O ₂₆ S ₄
Molecular Weight:	2271.71
Sequence:	Asp-Phe-Asp-Met-Leu-Arg-Cys-Met-Leu-Gly-Arg-Val-Tyr-Arg-Pro-Cys-Ala-Gln-Val (Disulfide bridge:Cys7-Cys16)
Sequence Shortening:	DFDMLRCMLGRVYRCAQV (Disulfide bridge:Cys7-Cys16)
Target:	MCHR1 (GPR24)
Pathway:	GPCR/G Protein; Neuronal Signaling
Storage:	Sealed storage, away from moisture
	Powder -80°C 2 years
	-20°C 1 year



* In solvent : -80°C, 6 months; -20°C, 1 month (sealed storage, away from moisture)

SOLVENT & SOLUBILITY

In Vitro	DMSO : 25 mg/mL (11.00 mM; Need ultrasonic)				
		Solvent Concentration	Mass 1 mg	5 mg	10 mg
	Preparing Stock Solutions	1 mM	0.4402 mL	2.2010 mL	4.4020 mL
		5 mM	0.0880 mL	0.4402 mL	0.8804 mL
		10 mM	0.0440 mL	0.2201 mL	0.4402 mL
Please refer to the solubility information to select the appropriate solvent.					
In Vivo	<ol style="list-style-type: none"> Add each solvent one by one: 10% DMSO >> 40% PEG300 >> 5% Tween-80 >> 45% saline Solubility: ≥ 2.5 mg/mL (1.10 mM); Clear solution Add each solvent one by one: 10% DMSO >> 90% (20% SBE-β-CD in saline) Solubility: ≥ 2.5 mg/mL (1.10 mM); Clear solution Add each solvent one by one: 10% DMSO >> 90% corn oil Solubility: ≥ 2.5 mg/mL (1.10 mM); Clear solution 				

BIOLOGICAL ACTIVITY

Description	[Ala17]-MCH, a MCH analogue (HY-P1525A), is a selective ligand for MCHR ₁ (K _i =0.16 nM) over MCHR ₂ (K _i =34 nM). [Eu ³⁺ chelate-labeled [Ala17]-MCH shows high affinity for MCHR ₁ (K _d =0.37 nM) while has little demonstrable binding affinity for MCHR ₂ ^[1] .
--------------------	------------------------------------------------------------------------------------------------------------------------------------------------------------------------------------------------------------------------------------------------------------------------------------------------------------------------------------------------------------------------

IC₅₀ & Target

Ki: 0.16 nM (MCHR1)

Ki: 34 nM (MCHR2)^[1]

REFERENCES

[1]. Xiaoying Gao, et al. Europium-labeled melanin-concentrating hormone analogues: ligands for measuring binding to melanin-concentrating hormone receptors 1 and 2. Anal Biochem. 2004 May 15;328(2):187-95.

Caution: Product has not been fully validated for medical applications. For research use only.

Tel: 609-228-6898

Fax: 609-228-5909

E-mail: tech@MedChemExpress.com

Address: 1 Deer Park Dr, Suite Q, Monmouth Junction, NJ 08852, USA