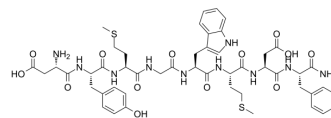


Cholecystokinin Octapeptide, desulfated

| | |
|-----------------------------|--|
| Cat. No.: | HY-P0196 |
| CAS No.: | 25679-24-7 |
| Molecular Formula: | C ₄₉ H ₆₂ N ₁₀ O ₁₃ S ₂ |
| Molecular Weight: | 1063.21 |
| Sequence: | Asp-Tyr-Met-Gly-Trp-Met-Asp-Phe-NH ₂ |
| Sequence Shortening: | DYMGWMDF-NH ₂ |
| Target: | Others |
| Pathway: | Others |
| Storage: | Sealed storage, away from moisture and light, under nitrogen |
| | Powder -80°C 2 years |
| | -20°C 1 year |



* In solvent : -80°C, 6 months; -20°C, 1 month (sealed storage, away from moisture and light, under nitrogen)

SOLVENT & SOLUBILITY

In Vitro

DMSO : ≥ 100 mg/mL (94.05 mM)
 * "≥" means soluble, but saturation unknown.

| Concentration | Solvent | Mass | | |
|---------------------------|---------|-----------|-----------|-----------|
| | | 1 mg | 5 mg | 10 mg |
| Preparing Stock Solutions | 1 mM | 0.9405 mL | 4.7027 mL | 9.4055 mL |
| | 5 mM | 0.1881 mL | 0.9405 mL | 1.8811 mL |
| | 10 mM | 0.0941 mL | 0.4703 mL | 0.9405 mL |

Please refer to the solubility information to select the appropriate solvent.

In Vivo

1. Add each solvent one by one: 10% DMSO >> 40% PEG300 >> 5% Tween-80 >> 45% saline
 Solubility: ≥ 2.5 mg/mL (2.35 mM); Clear solution
2. Add each solvent one by one: 10% DMSO >> 90% (20% SBE-β-CD in saline)
 Solubility: 2.5 mg/mL (2.35 mM); Suspended solution; Need ultrasonic
3. Add each solvent one by one: 10% DMSO >> 90% corn oil
 Solubility: ≥ 2.5 mg/mL (2.35 mM); Clear solution

BIOLOGICAL ACTIVITY

Description

Cholecystokinin Octapeptide, desulfated is a synthetic desulfated octapeptides of cholecystokinin (CCK)^[1].

CUSTOMER VALIDATION

- Int Immunopharmacol. 2023 Jun 24;121:110501.
- Oxid Med Cell Longev. 2022 Jun 20;2022:5905374.

See more customer validations on www.MedChemExpress.com

REFERENCES

[1]. L R Johnson, et al. Effect of sulfation on the gastrointestinal actions of caerulein. Gastroenterology. 1970 Feb;58(2):208-16.

Caution: Product has not been fully validated for medical applications. For research use only.

Tel: 609-228-6898

Fax: 609-228-5909

E-mail: tech@MedChemExpress.com

Address: 1 Deer Park Dr, Suite Q, Monmouth Junction, NJ 08852, USA