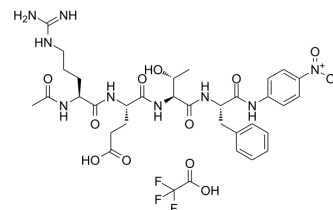


## RETF-4NA TFA

<b>Cat. No.:</b>	HY-P1347A
<b>Molecular Formula:</b>	C <sub>34</sub> H <sub>44</sub> F <sub>3</sub> N <sub>9</sub> O <sub>12</sub>
<b>Molecular Weight:</b>	827.76
<b>Sequence:</b>	Ac-Arg-Glu-Thr-Phe-pNA
<b>Sequence Shortening:</b>	Ac-RETF-pNA
<b>Target:</b>	Others
<b>Pathway:</b>	Others
<b>Storage:</b>	Sealed storage, away from moisture and light
	Powder    -80°C    2 years
	-20°C    1 year



\* In solvent : -80°C, 6 months; -20°C, 1 month (sealed storage, away from moisture and light)

## SOLVENT & SOLUBILITY

### In Vitro

DMSO : 110 mg/mL (132.89 mM; Need ultrasonic)  
 H<sub>2</sub>O : < 0.1 mg/mL (ultrasonic) (insoluble)

Preparing Stock Solutions	Solvent Concentration	Mass		
		1 mg	5 mg	10 mg
	1 mM	1.2081 mL	6.0404 mL	12.0808 mL
	5 mM	0.2416 mL	1.2081 mL	2.4162 mL
	10 mM	0.1208 mL	0.6040 mL	1.2081 mL

Please refer to the solubility information to select the appropriate solvent.

### In Vivo

- Add each solvent one by one: 10% DMSO >> 40% PEG300 >> 5% Tween-80 >> 45% saline  
Solubility: ≥ 2.75 mg/mL (3.32 mM); Clear solution
- Add each solvent one by one: 10% DMSO >> 90% (20% SBE-β-CD in saline)  
Solubility: ≥ 2.75 mg/mL (3.32 mM); Clear solution
- Add each solvent one by one: 10% DMSO >> 90% corn oil  
Solubility: ≥ 2.75 mg/mL (3.32 mM); Clear solution

## BIOLOGICAL ACTIVITY

### Description

RETF-4NA TFA, a chymase-specific substrate, is a sensitive and selective substrate for chymase when free or bound to α<sub>2</sub>M<sup>[1]</sup> [2].

---

## REFERENCES

---

- [1]. Wilfred W Raymond, et al. Alpha 2-macroglobulin Capture Allows Detection of Mast Cell Chymase in Serum and Creates a Reservoir of Angiotensin II-generating Activity. J Immunol. 2009 May 1;182(9):5770-7.
- [2]. Katariina Maaninka, et al. Human Mast Cells Arise From a Common Circulating Progenitor. J Allergy Clin Immunol. 2013 Aug;132(2):463-9.e3.
- 

**Caution: Product has not been fully validated for medical applications. For research use only.**

Tel: 609-228-6898

Fax: 609-228-5909

E-mail: [tech@MedChemExpress.com](mailto:tech@MedChemExpress.com)

Address: 1 Deer Park Dr, Suite Q, Monmouth Junction, NJ 08852, USA