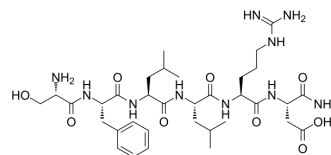


## TRAP-6 amide

<b>Cat. No.:</b>	HY-P2321
<b>CAS No.:</b>	141923-40-2
<b>Molecular Formula:</b>	C <sub>34</sub> H <sub>56</sub> N <sub>10</sub> O <sub>9</sub>
<b>Molecular Weight:</b>	748.87
<b>Target:</b>	Protease Activated Receptor (PAR)
<b>Pathway:</b>	GPCR/G Protein
<b>Storage:</b>	Sealed storage, away from moisture
	Powder    -80°C    2 years
	-20°C    1 year
	* In solvent : -80°C, 6 months; -20°C, 1 month (sealed storage, away from moisture)



## SOLVENT & SOLUBILITY

<b>In Vitro</b>	H <sub>2</sub> O : 100 mg/mL (133.53 mM; Need ultrasonic)			
		Solvent Concentration	Mass	
			1 mg	5 mg
			10 mg	
<b>Preparing Stock Solutions</b>	1 mM	1.3353 mL	6.6767 mL	13.3535 mL
	5 mM	0.2671 mL	1.3353 mL	2.6707 mL
	10 mM	0.1335 mL	0.6677 mL	1.3353 mL
Please refer to the solubility information to select the appropriate solvent.				
<b>In Vivo</b>	1. Add each solvent one by one: PBS Solubility: 33.33 mg/mL (44.51 mM); Clear solution; Need ultrasonic			

## BIOLOGICAL ACTIVITY

<b>Description</b>	TRAP-6 amide is a PAR-1 thrombin receptor agonist peptide <sup>[1]</sup> .
--------------------	--

## REFERENCES

[1]. Sofia Ramström, et al. Platelet Phosphatidylserine Exposure and Procoagulant Activity in Clotting Whole Blood--Different Effects of Collagen, TRAP and Calcium Ionophore A23187. Thromb Haemost. 2003 Jan;89(1):132-41.

---

**Caution: Product has not been fully validated for medical applications. For research use only.**

Tel: 609-228-6898

Fax: 609-228-5909

E-mail: [tech@MedChemExpress.com](mailto:tech@MedChemExpress.com)

Address: 1 Deer Park Dr, Suite Q, Monmouth Junction, NJ 08852, USA