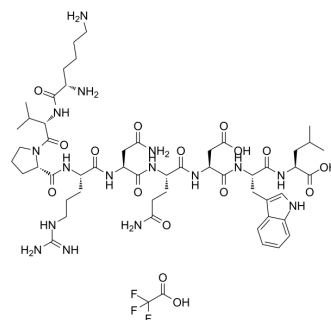


Gp100 (25-33), human TFA

Cat. No.:	HY-P1585A
Molecular Formula:	C ₅₄ H ₈₃ F ₃ N ₁₆ O ₁₆
Molecular Weight:	1269.33
Sequence:	Lys-Val-Pro-Arg-Asn-Gln-Asp-Trp-Leu
Sequence Shortening:	KVPRNQDWL
Target:	Others
Pathway:	Others
Storage:	Sealed storage, away from moisture and light
	Powder -80°C 2 years
	-20°C 1 year



* In solvent : -80°C, 6 months; -20°C, 1 month (sealed storage, away from moisture and light)

SOLVENT & SOLUBILITY

In Vitro	H ₂ O : 100 mg/mL (78.78 mM); Need ultrasonic)					
	Preparing Stock Solutions	Solvent	Mass	1 mg	5 mg	10 mg
		Concentration				
		1 mM		0.7878 mL	3.9391 mL	7.8782 mL
		5 mM		0.1576 mL	0.7878 mL	1.5756 mL
	10 mM		0.0788 mL	0.3939 mL	0.7878 mL	
Please refer to the solubility information to select the appropriate solvent.						
In Vivo	1. Add each solvent one by one: PBS Solubility: 66.67 mg/mL (52.52 mM); Clear solution; Need ultrasonic					

BIOLOGICAL ACTIVITY

Description	Gp100 (25-33), human TFA (Hgp100 (25-33) TFA) is the amino acids 25-33 fragment of the human melanoma antigen. It is a 9-amino acid (AA) epitope restricted by H-2D ^b and recognized by the T cells ^[1] .
--------------------	---

REFERENCES

[1]. Overwijk WW, et al. gp100/pm17 is a murine tumor rejection antigen: induction of "self"-reactive, tumoricidal T cells using high-affinity, altered peptide ligand. J Exp Med. 1998 Jul 20;188(2):277-86.

Caution: Product has not been fully validated for medical applications. For research use only.

Tel: 609-228-6898

Fax: 609-228-5909

E-mail: tech@MedChemExpress.com

Address: 1 Deer Park Dr, Suite Q, Monmouth Junction, NJ 08852, USA