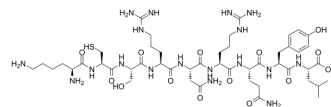


## Smcy HY Peptide (738-746)

<b>Cat. No.:</b>	HY-P1899
<b>CAS No.:</b>	207113-06-2
<b>Molecular Formula:</b>	C <sub>48</sub> H <sub>82</sub> N <sub>18</sub> O <sub>14</sub> S
<b>Molecular Weight:</b>	1167.34
<b>Sequence:</b>	Lys-Cys-Ser-Arg-Asn-Arg-Gln-Tyr-Leu
<b>Sequence Shortening:</b>	KCSRNRQYL
<b>Target:</b>	Others
<b>Pathway:</b>	Others
<b>Storage:</b>	Sealed storage, away from moisture and light, under nitrogen
	Powder    -80°C    2 years
	-20°C    1 year



\* In solvent : -80°C, 6 months; -20°C, 1 month (sealed storage, away from moisture and light, under nitrogen)

### SOLVENT & SOLUBILITY

#### In Vitro

H<sub>2</sub>O : 100 mg/mL (85.66 mM; Need ultrasonic)

Preparing Stock Solutions	Solvent		1 mg	5 mg	10 mg
	Concentration	Mass			
	1 mM		0.8566 mL	4.2832 mL	8.5665 mL
	5 mM		0.1713 mL	0.8566 mL	1.7133 mL
	10 mM		0.0857 mL	0.4283 mL	0.8566 mL

Please refer to the solubility information to select the appropriate solvent.

### BIOLOGICAL ACTIVITY

#### Description

Smcy HY Peptide (738-746) is a H2-D<sup>b</sup>-restricted peptide corresponding to amino acids 738-746 of Smcy protein<sup>[1]</sup>.

### REFERENCES

[1]. Hess SM, et al. Deletion of naïve T cells recognizing the minor histocompatibility antigen HY with toxin-coupled peptide-MHC class I tetramers inhibits cognate CTL responses and alters immunodominance. *Transpl Immunol.* 2013 Dec;29(1-4):138-45.

---

**Caution: Product has not been fully validated for medical applications. For research use only.**

Tel: 609-228-6898

Fax: 609-228-5909

E-mail: [tech@MedChemExpress.com](mailto:tech@MedChemExpress.com)

Address: 1 Deer Park Dr, Suite Q, Monmouth Junction, NJ 08852, USA