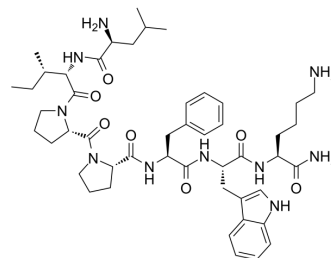


Cardiotoxin Analog (CTX) IV (6-12)

Cat. No.:	HY-P1902
CAS No.:	115722-23-1
Molecular Formula:	C ₄₈ H ₇₀ N ₁₀ O ₇
Molecular Weight:	899.13
Sequence:	Leu-Ile-Pro-Pro-Phe-Trp-Lys-NH ₂
Sequence Shortening:	LIPPFWK-NH ₂
Target:	Others
Pathway:	Others
Storage:	Sealed storage, away from moisture
	Powder -80°C 2 years
	-20°C 1 year



* In solvent : -80°C, 6 months; -20°C, 1 month (sealed storage, away from moisture)

SOLVENT & SOLUBILITY

In Vitro

H₂O : 100 mg/mL (111.22 mM; Need ultrasonic)

Concentration	Mass		
	1 mg	5 mg	10 mg
1 mM	1.1122 mL	5.5609 mL	11.1219 mL
5 mM	0.2224 mL	1.1122 mL	2.2244 mL
10 mM	0.1112 mL	0.5561 mL	1.1122 mL

Please refer to the solubility information to select the appropriate solvent.

BIOLOGICAL ACTIVITY

Description

Cardiotoxin Analog (CTX) IV (6-12) is a part peptide of Cardiotoxin Analog (CTX) IV. Cardiotoxin analogues IV isolated from the venom of Taiwan Cobra. CTX IV is an unique snake venom cardiotoxin^[1].

CUSTOMER VALIDATION

- Cell Death Dis. 2022 Sep 29;13(9):838.
- Int J Mol Sci. 2023 Mar 5.
- Commun Biol. 2022 Nov 9;5(1):1201.
- Cell Death Discov. 2022 Apr 30;8(1):236.

See more customer validations on www.MedChemExpress.com

REFERENCES

[1]. Kaneda N, et al. The amino acid sequence of cardiotoxin-analogue IV from the venom of *Naja naja atra*. FEBS Lett. 1976 Nov;70(1):217-22.

Caution: Product has not been fully validated for medical applications. For research use only.

Tel: 609-228-6898

Fax: 609-228-5909

E-mail: tech@MedChemExpress.com

Address: 1 Deer Park Dr, Suite Q, Monmouth Junction, NJ 08852, USA