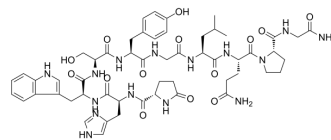


[Gln8]-C517 (LH-RH), chicken

Cat. No.: HY-P1905
CAS No.: 47922-48-5
Molecular Formula: C₅₄H₇₁N₁₅O₁₄
Molecular Weight: 1154.23
Sequence: {pGLU}-His-Trp-Ser-Tyr-Gly-Leu-Gln-Pro-Gly
Sequence Shortening: {pGLU}-HWSYGLQPG
Target: Others
Pathway: Others
Storage: Sealed storage, away from moisture



Powder -80°C 2 years
 -20°C 1 year
 * In solvent : -80°C, 6 months; -20°C, 1 month (sealed storage, away from moisture)

SOLVENT & SOLUBILITY

In Vitro

H₂O : 100 mg/mL (86.64 mM; Need ultrasonic)

Preparing Stock Solutions	Solvent Concentration	Mass		
		1 mg	5 mg	10 mg
	1 mM	0.8664 mL	4.3319 mL	8.6638 mL
	5 mM	0.1733 mL	0.8664 mL	1.7328 mL
	10 mM	0.0866 mL	0.4332 mL	0.8664 mL

Please refer to the solubility information to select the appropriate solvent.

BIOLOGICAL ACTIVITY

Description

[Gln8]-C517 (LH-RH), chicken is an avian hypothalamic peptide, which stimulates release of gonadotropins from anterior pituitary, thus regulating reproductive functions.

REFERENCES

[1]. Maurer JA, et al. Luteinizing hormone-releasing hormone (LHRH) neurons maintained in hypothalamic slice explant cultures exhibit a rapid LHRH mRNA turnover rate. *J Neurosci.* 1997 Dec 15;17(24):9481-91.

Caution: Product has not been fully validated for medical applications. For research use only.

Tel: 609-228-6898

Fax: 609-228-5909

E-mail: tech@MedChemExpress.com

Address: 1 Deer Park Dr, Suite Q, Monmouth Junction, NJ 08852, USA