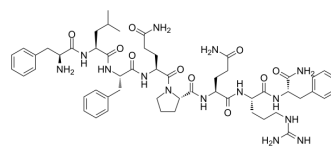


## Neuropeptide FF

<b>Cat. No.:</b>	HY-P1248
<b>CAS No.:</b>	99566-27-5
<b>Molecular Formula:</b>	C <sub>54</sub> H <sub>76</sub> N <sub>14</sub> O <sub>10</sub>
<b>Molecular Weight:</b>	1081.27
<b>Sequence:</b>	Phe-Leu-Phe-Gln-Pro-Gln-Arg-Phe-NH <sub>2</sub>
<b>Sequence Shortening:</b>	FLFQPQRF-NH <sub>2</sub>
<b>Target:</b>	Others
<b>Pathway:</b>	Others
<b>Storage:</b>	Sealed storage, away from moisture and light
	Powder    -80°C    2 years
	-20°C    1 year



\* In solvent : -80°C, 6 months; -20°C, 1 month (sealed storage, away from moisture and light)

### SOLVENT & SOLUBILITY

#### In Vitro

DMSO : 100 mg/mL (92.48 mM; Need ultrasonic)  
 H<sub>2</sub>O : 50 mg/mL (46.24 mM; Need ultrasonic)

Concentration	Mass		
	1 mg	5 mg	10 mg
1 mM	0.9248 mL	4.6242 mL	9.2484 mL
5 mM	0.1850 mL	0.9248 mL	1.8497 mL
10 mM	0.0925 mL	0.4624 mL	0.9248 mL

Please refer to the solubility information to select the appropriate solvent.

#### In Vivo

- Add each solvent one by one: 10% DMSO >> 40% PEG300 >> 5% Tween-80 >> 45% saline  
 Solubility: ≥ 2.5 mg/mL (2.31 mM); Clear solution
- Add each solvent one by one: 10% DMSO >> 90% (20% SBE-β-CD in saline)  
 Solubility: ≥ 2.5 mg/mL (2.31 mM); Clear solution
- Add each solvent one by one: 10% DMSO >> 90% corn oil  
 Solubility: ≥ 2.5 mg/mL (2.31 mM); Clear solution

### BIOLOGICAL ACTIVITY

#### Description

Neuropeptide FF (NPFF), an octapeptide belonging to the RF-amide family of peptides, interacts with two distinct G-protein-coupled receptors, NPFF(1) and NPFF(2) and has wide variety of physiological functions in the brain including central cardiovascular and neuroendocrine regulation<sup>[1][2]</sup>.

---

## REFERENCES

- [1]. Mankus JV, et al. Nonpeptide ligands of neuropeptide FF: current status and structural insights. *Future Med Chem.* 2012 Jun;4(9):1085-92.
- [2]. Jhamandas JH, et al. Role of neuropeptide FF in central cardiovascular and neuroendocrine regulation. *Front Endocrinol (Lausanne).* 2013 Feb 7;4:8.
- 

**Caution: Product has not been fully validated for medical applications. For research use only.**

Tel: 609-228-6898

Fax: 609-228-5909

E-mail: [tech@MedChemExpress.com](mailto:tech@MedChemExpress.com)

Address: 1 Deer Park Dr, Suite Q, Monmouth Junction, NJ 08852, USA