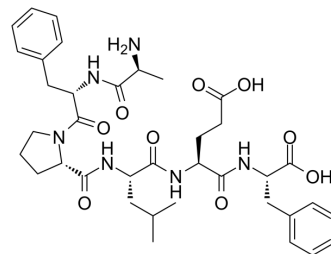


ACTH (34-39)

Cat. No.:	HY-P1739
CAS No.:	69454-10-0
Molecular Formula:	C ₃₇ H ₅₀ N ₆ O ₉
Molecular Weight:	722.83
Sequence:	Ala-Phe-Pro-Leu-Glu-Phe
Sequence Shortening:	AFPLEF
Target:	Others
Pathway:	Others
Storage:	Sealed storage, away from moisture
	Powder -80°C 2 years
	-20°C 1 year



* In solvent : -80°C, 6 months; -20°C, 1 month (sealed storage, away from moisture)

SOLVENT & SOLUBILITY

In Vitro	DMSO : 100 mg/mL (138.35 mM; Need ultrasonic)					
	Preparing Stock Solutions	Solvent Concentration	Mass	1 mg	5 mg	10 mg
			1 mM	1.3835 mL	6.9173 mL	13.8345 mL
			5 mM	0.2767 mL	1.3835 mL	2.7669 mL
10 mM			0.1383 mL	0.6917 mL	1.3835 mL	
Please refer to the solubility information to select the appropriate solvent.						
In Vivo	1. Add each solvent one by one: 10% DMSO >> 40% PEG300 >> 5% Tween-80 >> 45% saline Solubility: ≥ 2.5 mg/mL (3.46 mM); Clear solution					
	2. Add each solvent one by one: 10% DMSO >> 90% (20% SBE-β-CD in saline) Solubility: ≥ 2.5 mg/mL (3.46 mM); Clear solution					
	3. Add each solvent one by one: 10% DMSO >> 90% corn oil Solubility: ≥ 2.5 mg/mL (3.46 mM); Clear solution					

BIOLOGICAL ACTIVITY

Description	ACTH (34-39) is an adrenocorticotrophic hormone fragment ^[1] .
-------------	---

REFERENCES

[1]. Léger L, et al. A monoclonal antibody directed against CLIP (ACTH 18-39). Anatomical distribution of immunoreactivity in the rat brain and hypophysis with quantification of the hypothalamic cell group. J Chem Neuroanat. 1990 Jul-Aug;3(4):297-308.

Caution: Product has not been fully validated for medical applications. For research use only.

Tel: 609-228-6898

Fax: 609-228-5909

E-mail: tech@MedChemExpress.com

Address: 1 Deer Park Dr, Suite Q, Monmouth Junction, NJ 08852, USA