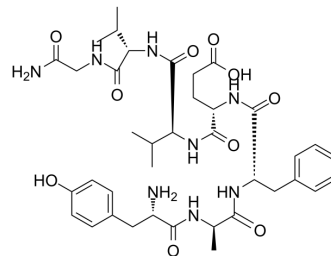


## Deltorphin 2

<b>Cat. No.:</b>	HY-P1013		
<b>CAS No.:</b>	122752-16-3		
<b>Molecular Formula:</b>	C <sub>38</sub> H <sub>54</sub> N <sub>8</sub> O <sub>10</sub>		
<b>Molecular Weight:</b>	782.88		
<b>Sequence Shortening:</b>	Y-{d-Ala}-FEVWG-NH <sub>2</sub>		
<b>Target:</b>	Opioid Receptor		
<b>Pathway:</b>	GPCR/G Protein; Neuronal Signaling		
<b>Storage:</b>	Powder	-80°C	2 years
		-20°C	1 year
	In solvent	-80°C	6 months
		-20°C	1 month



### SOLVENT & SOLUBILITY

#### In Vitro

H<sub>2</sub>O : 7.5 mg/mL (9.58 mM; Need ultrasonic and warming)

Concentration	Solvent	Mass	1 mg	5 mg	10 mg
			1 mM	1.2773 mL	6.3867 mL
5 mM		0.2555 mL	1.2773 mL	2.5547 mL	
10 mM		---	---	---	

Please refer to the solubility information to select the appropriate solvent.

### BIOLOGICAL ACTIVITY

#### Description

Deltorphin 2 is a selective peptide agonist for the  $\delta$  opioid receptor.

#### IC<sub>50</sub> & Target

$\delta$  opioid receptor<sup>[1]</sup>

#### In Vitro

Deltorphin 2 ([D-Ala<sup>2</sup>]-Deltorphin II) is enzymatically stable, amphibian heptapeptides that has a high affinity and selectivity for delta-opioid receptor. Deltorphin 2 is the most selective natural delta opioid receptor agonist<sup>[1]</sup>.  
MCE has not independently confirmed the accuracy of these methods. They are for reference only.

### CUSTOMER VALIDATION

- Invest Ophthalmol Vis Sci. 2019 Sep 3;60(12):3842-3853.

---

See more customer validations on [www.MedChemExpress.com](http://www.MedChemExpress.com)

## REFERENCES

---

[1]. Thomas SA, et al. Structure-activity relationships of a series of [D-Ala2]deltorphin I and II analogues; in vitro blood-brain barrier permeability and stability. J Pharmacol Exp Ther. 1997 May;281(2):817-25.

---

**Caution: Product has not been fully validated for medical applications. For research use only.**

Tel: 609-228-6898

Fax: 609-228-5909

E-mail: [tech@MedChemExpress.com](mailto:tech@MedChemExpress.com)

Address: 1 Deer Park Dr, Suite Q, Monmouth Junction, NJ 08852, USA