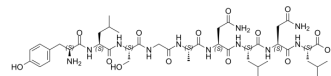


Carcinoembryonic Antigen (CEA)

Cat. No.: HY-P0277
CAS No.: 168635-85-6
Molecular Formula: C₄₃H₆₉N₁₁O₁₄
Molecular Weight: 964.07
Sequence: Tyr-Leu-Ser-Gly-Ala-Asn-Leu-Asn-Leu
Sequence Shortening: YLSGANLNL
Target: Others
Pathway: Others
Storage: Sealed storage, away from moisture and light
 Powder -80°C 2 years
 -20°C 1 year



* In solvent : -80°C, 6 months; -20°C, 1 month (sealed storage, away from moisture and light)

SOLVENT & SOLUBILITY

In Vitro

H₂O : 12.5 mg/mL (12.97 mM; Need ultrasonic)

Preparing Stock Solutions	Solvent Concentration	Mass		
		1 mg	5 mg	10 mg
	1 mM	1.0373 mL	5.1863 mL	10.3727 mL
	5 mM	0.2075 mL	1.0373 mL	2.0745 mL
	10 mM	0.1037 mL	0.5186 mL	1.0373 mL

Please refer to the solubility information to select the appropriate solvent.

BIOLOGICAL ACTIVITY

Description

Carcinoembryonic Antigen (CEA) is a tumor marker in lung cancer.

In Vitro

Carcinoembryonic Antigen (CEA) as tumor marker in lung cancer. The use of CEA as a prognostic and predictive marker. CEA is a glycoprotein involved in cell adhesion, and is normally produced during fetal development but the production stops before birth. CEA is a glycosyl phosphatidyl inositol (GPI)-cell surface anchored glycoprotein whose specialized sialofucosylated glycoforms serve as functional colon carcinoma L-selectin and E-selectin ligands, which may be critical to the metastatic dissemination of colon carcinoma cells^[1].

MCE has not independently confirmed the accuracy of these methods. They are for reference only.

REFERENCES

Caution: Product has not been fully validated for medical applications. For research use only.

Tel: 609-228-6898

Fax: 609-228-5909

E-mail: tech@MedChemExpress.com

Address: 1 Deer Park Dr, Suite Q, Monmouth Junction, NJ 08852, USA