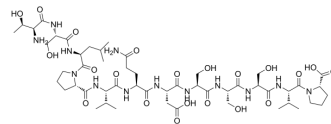


Interleukin (IL)-6 Receptor

Cat. No.:	HY-P0317
Molecular Formula:	C ₅₁ H ₈₅ N ₁₃ O ₂₁
Molecular Weight:	1216.3
Sequence:	Thr-Ser-Leu-Pro-Val-Gln-Asp-Ser-Ser-Ser-Val-Pro
Sequence Shortening:	TSLPVQDSSSVP
Target:	Interleukin Related
Pathway:	Immunology/Inflammation
Storage:	Sealed storage, away from moisture
	Powder -80°C 2 years
	-20°C 1 year



* In solvent : -80°C, 6 months; -20°C, 1 month (sealed storage, away from moisture)

SOLVENT & SOLUBILITY

In Vitro

H₂O : ≥ 50 mg/mL (41.11 mM)
 * "≥" means soluble, but saturation unknown.

Preparing Stock Solutions	Solvent Concentration	Mass		
		1 mg	5 mg	10 mg
	1 mM	0.8222 mL	4.1108 mL	8.2217 mL
	5 mM	0.1644 mL	0.8222 mL	1.6443 mL
	10 mM	0.0822 mL	0.4111 mL	0.8222 mL

Please refer to the solubility information to select the appropriate solvent.

In Vivo

1. Add each solvent one by one: PBS
 Solubility: 50 mg/mL (41.11 mM); Clear solution; Need ultrasonic

BIOLOGICAL ACTIVITY

Description

Interleukin (IL)-6 Receptor is a peptide, derived from interleukin-6 receptor.

Caution: Product has not been fully validated for medical applications. For research use only.

Tel: 609-228-6898

Fax: 609-228-5909

E-mail: tech@MedChemExpress.com

Address: 1 Deer Park Dr, Suite Q, Monmouth Junction, NJ 08852, USA