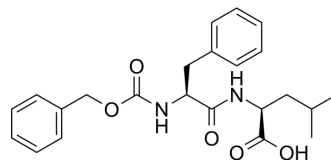


## Z-Phe-Leu-OH

|                    |   |       |          |
|--------------------|---|-------|----------|
| Cat. No.:          | HY-W010955  |       |          |
| CAS No.:           | 4313-73-9   |       |          |
| Molecular Formula: | C <sub>23</sub> H <sub>28</sub> N <sub>2</sub> O <sub>5</sub> |       |          |
| Molecular Weight:  | 412.48  |       |          |
| Target:            | Biochemical Assay Reagents                                    |       |          |
| Pathway:           | Others  |       |          |
| Storage:           | Powder  | -20°C | 3 years  |
|                    | In solvent  | -80°C | 6 months |
|                    |   | -20°C | 1 month  |



### BIOLOGICAL ACTIVITY

#### Description

Z-Phe-Leu-OH (NSC 334018) is a substrate for carboxypeptidase Y (CPY). Z-Phe-Leu-OH is incubated with recombinant CPY to determine peptidase activity<sup>[1]</sup>.

### REFERENCES

[1]. Makino M, et, al. Carboxypeptidase Y activity and maintenance is modulated by a large helical structure. FEBS Open Bio. 2019 Jul;9(7):1337-1343.

**Caution: Product has not been fully validated for medical applications. For research use only.**

Tel: 609-228-6898

Fax: 609-228-5909

E-mail: tech@MedChemExpress.com

Address: 1 Deer Park Dr, Suite Q, Monmouth Junction, NJ 08852, USA