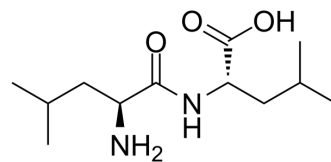


Leu-Leu-OH

Cat. No.:	HY-W008642
CAS No.:	3303-31-9
Molecular Formula:	C ₁₂ H ₂₄ N ₂ O ₃
Molecular Weight:	244.33
Target:	Others
Pathway:	Others
Storage:	Sealed storage, away from moisture Powder -80°C 2 years -20°C 1 year * In solvent : -80°C, 6 months; -20°C, 1 month (sealed storage, away from moisture)



SOLVENT & SOLUBILITY

In Vitro	DMSO : < 1 mg/mL (ultrasonic;warming;heat to 60°C) (insoluble or slightly soluble)
-----------------	--

BIOLOGICAL ACTIVITY

Description	Leu-Leu-OH, a Leu derivative, is a dipeptide.
IC₅₀ & Target	Human Endogenous Metabolite

Caution: Product has not been fully validated for medical applications. For research use only.

Tel: 609-228-6898

Fax: 609-228-5909

E-mail: tech@MedChemExpress.com

Address: 1 Deer Park Dr, Suite Q, Monmouth Junction, NJ 08852, USA