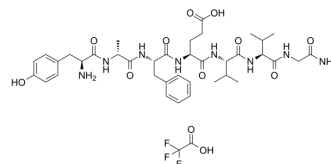


Deltorhin 2 TFA

Cat. No.:	HY-P1013A
Molecular Formula:	C ₄₀ H ₅₅ F ₃ N ₈ O ₁₂
Molecular Weight:	896.91
Target:	Opioid Receptor
Pathway:	GPCR/G Protein; Neuronal Signaling
Storage:	Sealed storage, away from moisture
	Powder -80°C 2 years
	-20°C 1 year



* In solvent : -80°C, 6 months; -20°C, 1 month (sealed storage, away from moisture)

SOLVENT & SOLUBILITY

In Vitro	DMSO : 50 mg/mL (55.75 mM; Need ultrasonic)				
		Solvent Concentration	Mass		
	Preparing Stock Solutions		1 mg	5 mg	10 mg
		1 mM	1.1149 mL	5.5747 mL	11.1494 mL
		5 mM	0.2230 mL	1.1149 mL	2.2299 mL
	10 mM	0.1115 mL	0.5575 mL	1.1149 mL	
Please refer to the solubility information to select the appropriate solvent.					
In Vivo	1. Add each solvent one by one: 10% DMSO >> 40% PEG300 >> 5% Tween-80 >> 45% saline Solubility: ≥ 2.5 mg/mL (2.79 mM); Clear solution				
	2. Add each solvent one by one: 10% DMSO >> 90% (20% SBE-β-CD in saline) Solubility: ≥ 2.5 mg/mL (2.79 mM); Clear solution				
	3. Add each solvent one by one: 10% DMSO >> 90% corn oil Solubility: ≥ 2.5 mg/mL (2.79 mM); Clear solution				

BIOLOGICAL ACTIVITY

Description	Deltorhin 2 TFA is a selective peptide agonist for the δ opioid receptor ^[1] .
IC ₅₀ & Target	δ Opioid Receptor/DOR
In Vitro	Deltorhin 2 ([D-Ala ²]-Deltorhin II) is enzymatically stable, amphibian heptapeptides that has a high affinity and selectivity for delta-opioid receptor. Deltorhin 2 is the most selective natural delta opioid receptor agonist ^[1] . MCE has not independently confirmed the accuracy of these methods. They are for reference only.

CUSTOMER VALIDATION

- Cell. 2023 Jan 19;186(2):413-427.e17.
- Invest Ophthalmol Vis Sci. 2019 Sep 3;60(12):3842-3853.

See more customer validations on www.MedChemExpress.com

REFERENCES

[1]. Thomas SA, et al. Structure-activity relationships of a series of [D-Ala²]deltorphin I and II analogues; in vitro blood-brain barrier permeability and stability. J Pharmacol Exp Ther. 1997 May;281(2):817-25.

Caution: Product has not been fully validated for medical applications. For research use only.

Tel: 609-228-6898

Fax: 609-228-5909

E-mail: tech@MedChemExpress.com

Address: 1 Deer Park Dr, Suite Q, Monmouth Junction, NJ 08852, USA