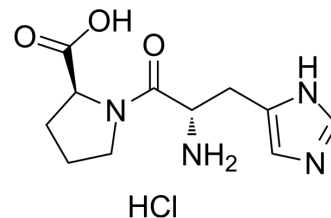


His-Pro hydrochloride

Cat. No.:	HY-111659A
Molecular Formula:	C ₁₁ H ₁₇ ClN ₄ O ₃
Molecular Weight:	288.73
Target:	Others
Pathway:	Others
Storage:	Sealed storage, away from moisture and light
	Powder -80°C 2 years
	-20°C 1 year

* In solvent : -80°C, 6 months; -20°C, 1 month (sealed storage, away from moisture and light)



SOLVENT & SOLUBILITY

In Vitro

DMSO : 125 mg/mL (432.93 mM; Need ultrasonic)

Concentration	Solvent	Mass		
		1 mg	5 mg	10 mg
Preparing Stock Solutions	1 mM	3.4634 mL	17.3172 mL	34.6344 mL
	5 mM	0.6927 mL	3.4634 mL	6.9269 mL
	10 mM	0.3463 mL	1.7317 mL	3.4634 mL

Please refer to the solubility information to select the appropriate solvent.

BIOLOGICAL ACTIVITY

Description

His-Pro hydrochloride is a dipeptide consisting of histidyl and proline.

REFERENCES

[1]. Park SW, et al. Alterations in pancreatic protein expression in STZ-induced diabetic rats and genetically diabetic mice in response to treatment with hypoglycemic dipeptide Cyclo (His-Pro). *Cell Physiol Biochem*. 2012;29(3-4):603-16.

Caution: Product has not been fully validated for medical applications. For research use only.

Tel: 609-228-6898

Fax: 609-228-5909

E-mail: tech@MedChemExpress.com

Address: 1 Deer Park Dr, Suite Q, Monmouth Junction, NJ 08852, USA