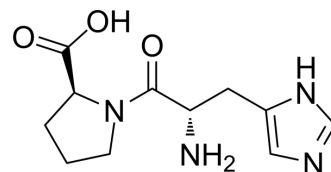


His-Pro

Cat. No.:	HY-111659
CAS No.:	20930-58-9
Molecular Formula:	C ₁₁ H ₁₆ N ₄ O ₃
Molecular Weight:	252.27
Target:	Others
Pathway:	Others
Storage:	Please store the product under the recommended conditions in the Certificate of Analysis.



SOLVENT & SOLUBILITY

In Vitro

H₂O : 250 mg/mL (991.00 mM; Need ultrasonic)

Concentration	Solvent	Mass		
		1 mg	5 mg	10 mg
Preparing Stock Solutions	1 mM	3.9640 mL	19.8200 mL	39.6401 mL
	5 mM	0.7928 mL	3.9640 mL	7.9280 mL
	10 mM	0.3964 mL	1.9820 mL	3.9640 mL

Please refer to the solubility information to select the appropriate solvent.

BIOLOGICAL ACTIVITY

Description

His-Pro is a dipeptide consisting of histidyl and proline.

REFERENCES

[1]. Park SW, et al. Alterations in pancreatic protein expression in STZ-induced diabetic rats and genetically diabetic mice in response to treatment with hypoglycemic dipeptide Cyclo (His-Pro). *Cell Physiol Biochem*. 2012;29(3-4):603-16.

Caution: Product has not been fully validated for medical applications. For research use only.

Tel: 609-228-6898

Fax: 609-228-5909

E-mail: tech@MedChemExpress.com

Address: 1 Deer Park Dr, Suite Q, Monmouth Junction, NJ 08852, USA