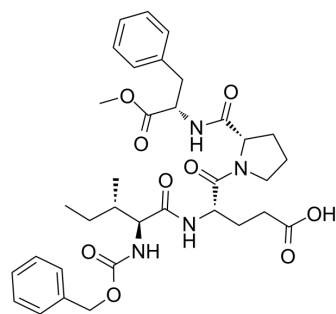


CH 5450

Cat. No.:	HY-16707
CAS No.:	252557-97-4
Molecular Formula:	C ₃₄ H ₄₄ N ₄ O ₉
Molecular Weight:	652.73
Sequence:	Z-Ile-Glu-Pro-Phe-Ome
Sequence Shortening:	ZIEPF-Ome
Target:	Others
Pathway:	Others
Storage:	Sealed storage, away from moisture
	Powder -80°C 2 years
	-20°C 1 year



* In solvent : -80°C, 6 months; -20°C, 1 month (sealed storage, away from moisture)

SOLVENT & SOLUBILITY

In Vitro	DMSO : ≥ 43 mg/mL (65.88 mM)				
	* "≥" means soluble, but saturation unknown.				
		Solvent Concentration	Mass 1 mg	5 mg	10 mg
	Preparing Stock Solutions	1 mM	1.5320 mL	7.6601 mL	15.3203 mL
		5 mM	0.3064 mL	1.5320 mL	3.0641 mL
10 mM		0.1532 mL	0.7660 mL	1.5320 mL	
Please refer to the solubility information to select the appropriate solvent.					
In Vivo	1. Add each solvent one by one: 10% DMSO >> 40% PEG300 >> 5% Tween-80 >> 45% saline Solubility: ≥ 2.5 mg/mL (3.83 mM); Clear solution				
	2. Add each solvent one by one: 10% DMSO >> 90% corn oil Solubility: ≥ 2.5 mg/mL (3.83 mM); Clear solution				

BIOLOGICAL ACTIVITY

Description	CH 5450 (Z-Ile-Glu-Pro-Phe-Ome) is a selective short peptide human cardiac chymase inhibitor. CH-5450 inhibits the action of rat MAB elastase 2 on substrate Ang I with an IC ₅₀ value of 49 μM and N-succinyl-Ala-Ala-Pro-Phe-p-nitroanilide with an IC ₅₀ value of 4.8 μM ^[1] .
IC ₅₀ & Target	Chymase

REFERENCES

[1]. Carlos F Santos, et al. Kinetic characterization and inhibition of the rat MAB elastase-2, an angiotensin I-converting serine protease. Can J Physiol Pharmacol. 2002 Jan;80(1):42-7.

Caution: Product has not been fully validated for medical applications. For research use only.

Tel: 609-228-6898

Fax: 609-228-5909

E-mail: tech@MedChemExpress.com

Address: 1 Deer Park Dr, Suite Q, Monmouth Junction, NJ 08852, USA